



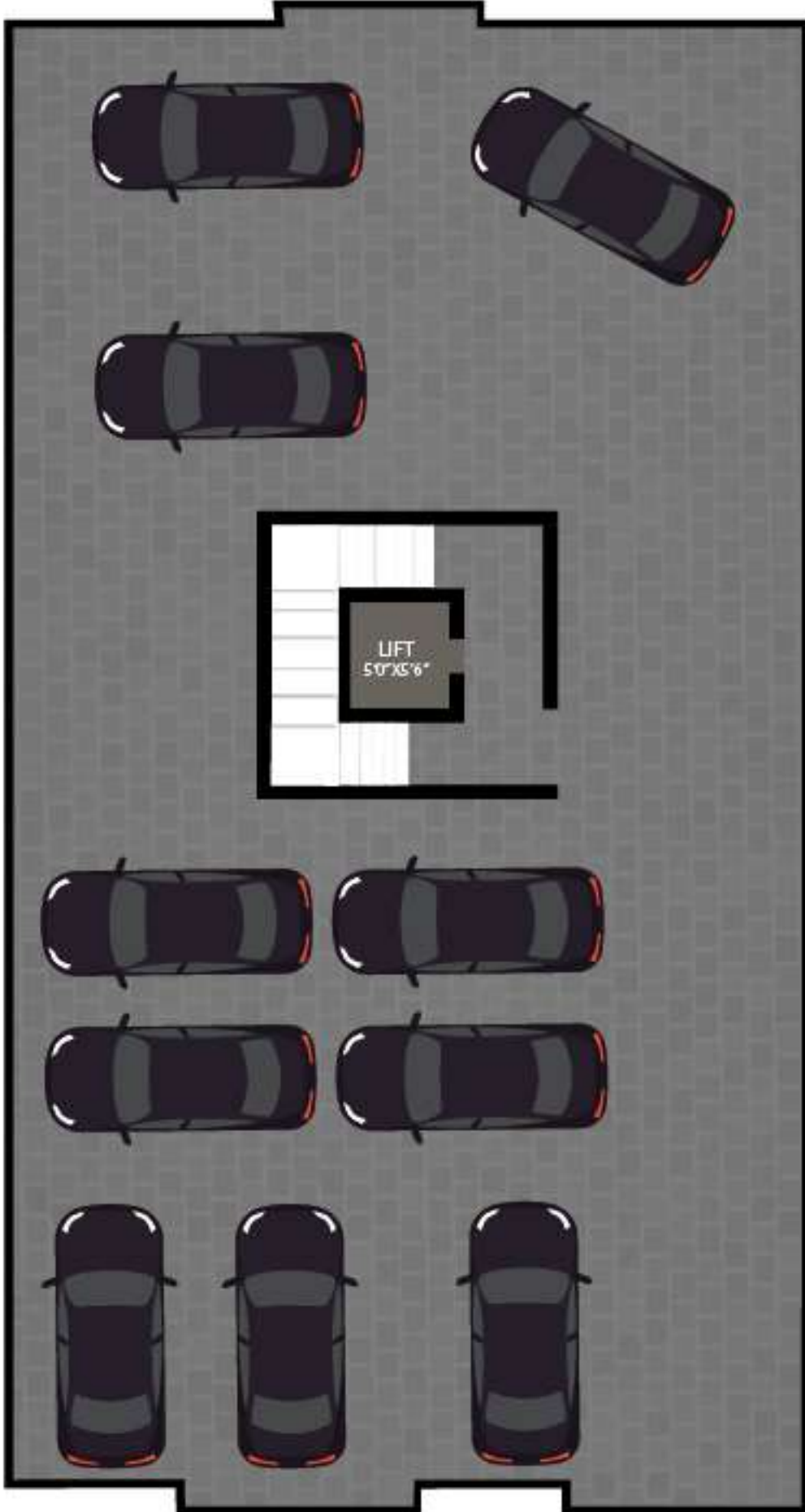
NEXA'S GS ENCLAVE

No.23, 62nd Street,
Ashok Nagar, Chennai - 600083

98401 44022 | 87544 15020



STILT FLOOR





FIRST FLOOR





SECOND FLOOR





THIRD FLOOR



ONGOING PROJECTS



HVC
Plot No. 2 - AEC, Jeeva nith Nagar,
Gh Mohd A.K.A Annamala / Aw, ch - 608027.
Rate starting from 1708-1920 sq.ft.



Shallow
Plot No. 12, Bharani Nagar,
Kodambakkam, ch - 600068.
Rate starting from 881 - 1441 sq.ft.



Apex
No. 308 periyar Nagar, Kottur, ch - 600008.
Rate starting from 731 - 1318 sq.ft.



Mangal Enclave
Plot no. 252, 13th street, Sakinagar,
Villupuram, ch - 600040.
Rate starting from 621 - 1802 sq.ft.



Sunshine
Plot No. 27, 2nd street, Cauvery Nagar,
Saidapet, ch - 600015.
Rate starting from 862 - 950 sq.ft.



Arish
No. 168A, 6th Street, T.N.M.B Colony,
Korambur, ch - 600009.
Rate starting from 903 - 1180 sq.ft.

PROJECT SPECIFICATION:

FOUNDATION & STRUCTURE

- RCC column, beam, and slab frame structure, Stilt + 4 floors.
- 9" thick outer walls & 4.5" thick internal walls with Wirecut Red Brick masonry filler and cement plastering.

FLOOR FINISHES

- Living, dining, and kitchen with SOMANY/KAJARIA vitrified flooring (2x2).
- Balconies, utilitarian vitrified tiles with a matte finish, and non-skid tiles.
- Bathroom - The ceiling will be coated with two coat of emulsion and premium glazed ceramic tiles up to a ceiling height of 300 x 450 mm and Anti-Skid tiles for the floor.

WALL COMPONENTS & PAINTING

- Outdoor Ace emulsion paints from Asian Paints.
- Internal Walls - Two coatings of putty were applied to the walls One coat of primer and Two coats of emulsion.

BATHROOM

- White glazed vitreous from Parryware makes EWC/WC washbasin C.P fitting and other suitable fixtures from metro / Parryware / Carry on fittings.
- Health Faucet shall be provided in all toilets.
- Provision for exhaust fan & geyser.

DOORS & WINDOWS

- Main Entrance Door - Teak wood frame with an OST 40mm thick flush door that is 7'0" in height and has a Godrej lock or an equivalent company, tower bolt, a door viewer, and a door stopper.
- Bedroom Door - Solid wood frame with a flush door of 35 mm thickness, 7'0" in height, and locks made by Godrej or an equivalent company, as well as a thumb turn and a key.
- Bathroom doors - Solid wood frame, moulded skin, and a thumb turn lock made by Godrej or a comparable company.
- Windows - French UPVC openable windows and MS grills.

POWER & ELECTRICAL

- A three-phase electrical supply connection with a switchover facility, copper wiring with the ISI brand on it, and high-quality modular switches for power and lighting.
- As specified, provide the necessary lighting, fans, and plug points will be provided for all living spaces as per the client's requirements.